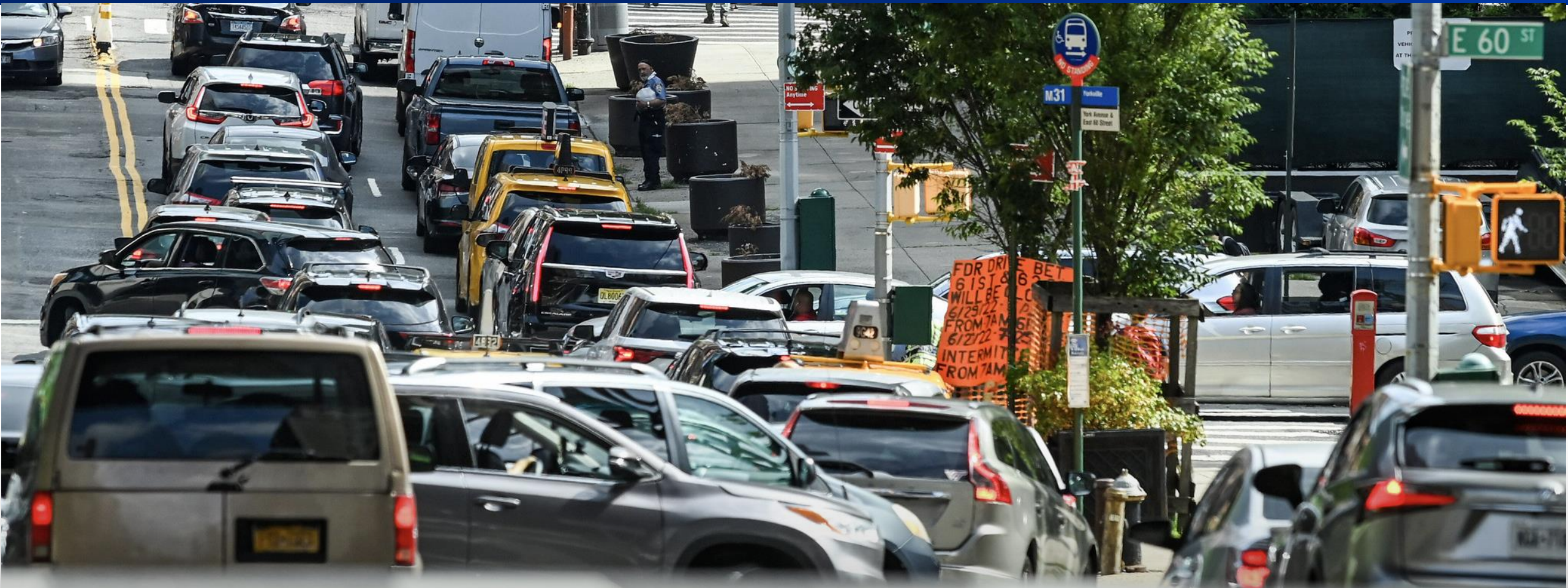




Department of
Transportation



December 2024

Congestion Pricing Public Webinar

Agenda

1. Why Does New York Need Congestion Pricing?
2. How Will Congestion Pricing Help?
3. How Does Congestion Pricing Work?
4. Who Gets Discounts & Exemptions?
5. Additional Resources



Why Does NY Need Congestion Pricing?

The Problem

Congestion Costs New Yorkers

- 700,000+ vehicles enter Manhattan below 60 St every weekday.
- Since 2010, travel speeds have decreased by 23% -- from 9.2 mph to just 7.1 mph.
- According to the Mayor's Management Report, ambulance response times have increased steadily due to traffic, putting lives at risk.



The Solution? Congestion Pricing

In 2019, the State Legislature passed a law directing the MTA to implement congestion pricing in partnership with NYCDOT and NYSDOT.

Charging vehicles to enter the Congestion Relief Zone will both **reduce traffic congestion** and **raise revenue for critical investments in transit**.

The Congestion Relief Zone includes local streets and avenues in Manhattan south of and including 60 St, excluding the FDR Drive, West Side Highway/Route 9A, and the Hugh L. Carey Tunnel connections to West Street.

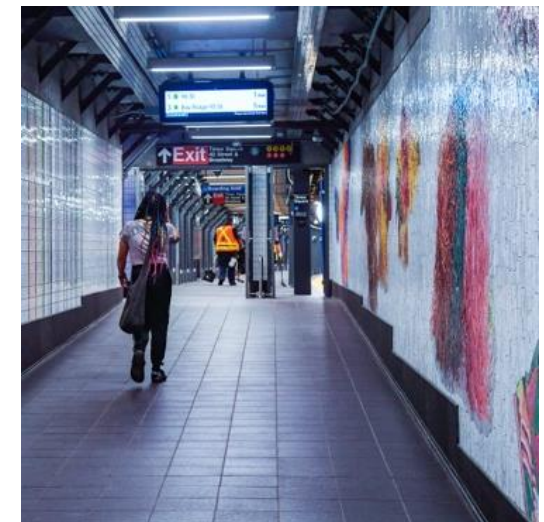
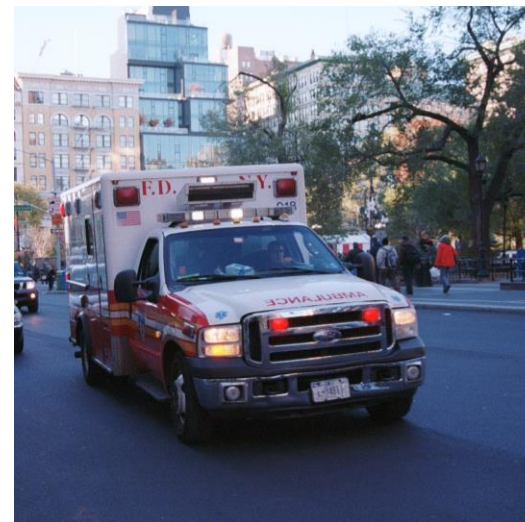




How Will Congestion Pricing Help?

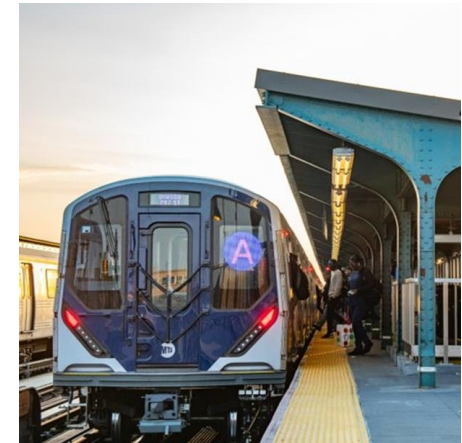
Congestion Pricing Benefits

- Less traffic
- Faster travel times, incl for emergency response
- Cleaner air
- Safer streets
- Better transit



\$15 B in Capital Improvements to NY's Transit System

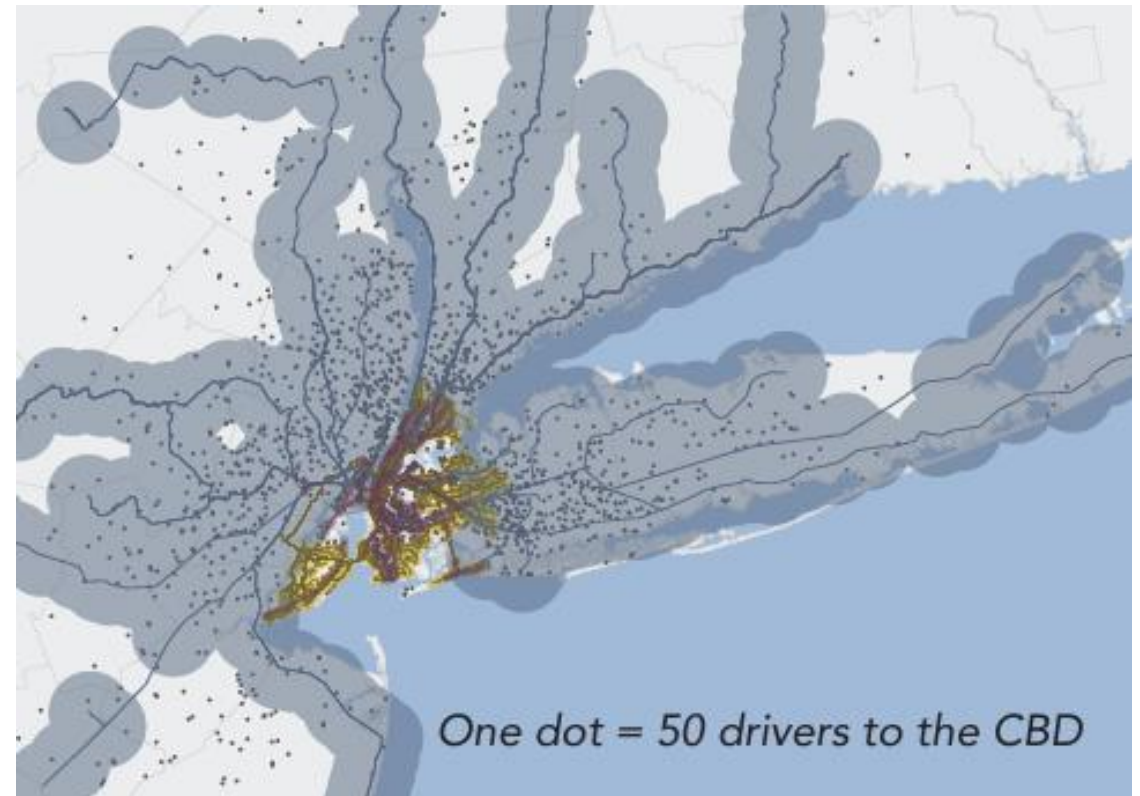
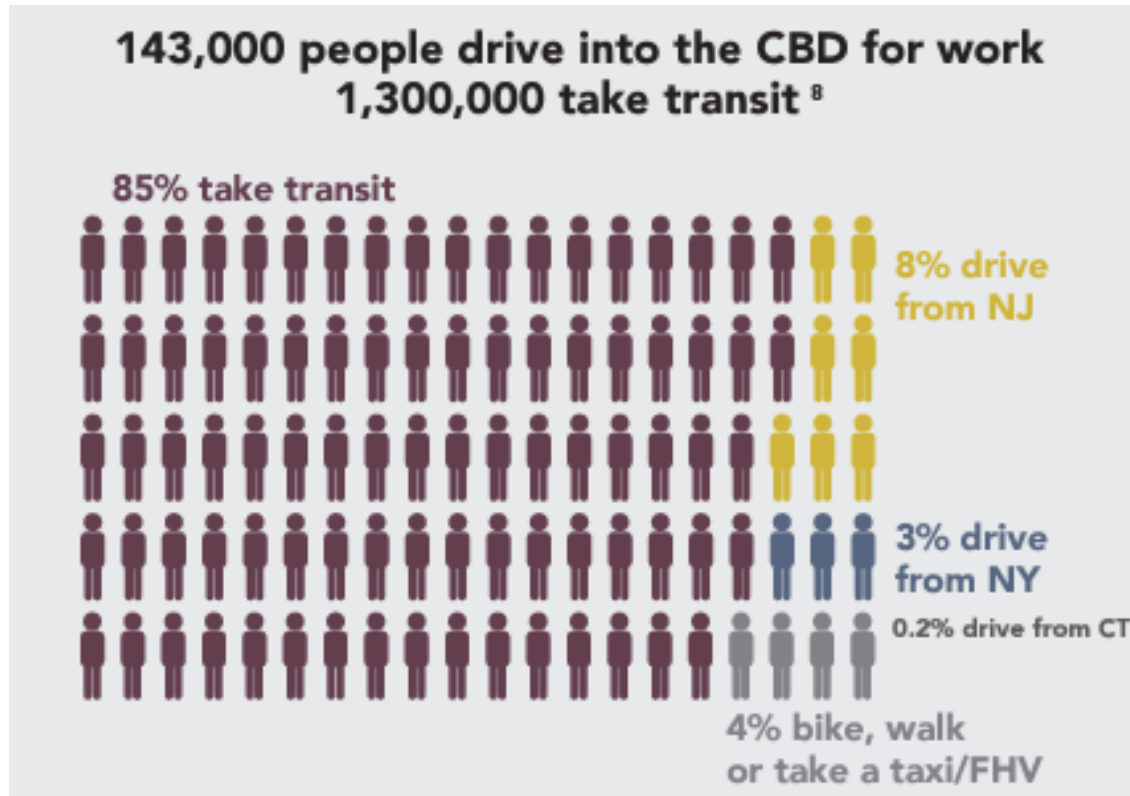
- \$2 B 20+ station accessibility improvements
- \$3 B Signal upgrades along the **ACBDFM** lines
- \$3 B Second Avenue Subway extension to East Harlem
- \$1.5 B New railcars
- \$500 M New electric buses and charging infrastructure
- \$5 B State of Good Repair projects



Congestion Pricing Benefits the Vast Majority of Commuters

85% of workers who commute to the CRZ take transit. Only 11% drive.

The vast majority of those who drive have access to transit.



Congestion Pricing Goes Live at Midnight on Sunday, January 5, 2025





How Does Congestion Pricing Work?

How Does Congestion Pricing Work?

- Detection points along the boundary of the CRZ will read the license plates of all vehicles entering the zone.
- If an E-ZPass transponder is detected and the license plate of the vehicle matches what's on the E-ZPass account, the E-ZPass toll rate will be charged to that account.
- If the license plate number and the E-ZPass account do not match or if an E-ZPass is not present, the vehicle owner will receive a Toll by Mail.
- Toll by Mail rates are higher than E-ZPass rates, so please log into your E-ZPass account today and make sure your vehicle information is up to date.

Paying the Toll Using E-ZPass

E-ZPass is the best way to pay the Congestion Relief Zone toll.

Drivers may use an E-ZPass from any state to pay the CRZ toll.

Make sure your E-ZPass is up to date!

If your vehicle's license plate does not match what's on your E-ZPass account, you'll receive a Tolls by Mail bill, which is 50% more than the E-ZPass rate.

In the first 60 days of the program, drivers will only be charged the applicable Congestion Relief Zone toll. No additional fees, charges, or fines, such as late fees, will be applied.



Toll Rates – Passenger Vehicles & Motorcycles

- Tolls charged as vehicles **enter** the Congestion Relief Zone – not for exiting or staying in the zone.
- Passenger vehicles & motorcycles are tolled once daily; the charge is based on first entry into the CRZ.
- Peak period runs from 5am to 9pm Mon-Fri, and 9am to 9pm Sat-Sun. Overnight tolls rates are 75% lower.

Vehicle Type	E-ZPass Rate		Tolls by Mail Rate	
	Peak	Overnight	Peak	Overnight
Passenger Vehicles (Sedans, pickup trucks, SUVs, minivans, small vans)	\$9	\$2.25	\$13.50	\$3.30
Motorcycles	\$4.50	\$1.05	\$6.75	\$1.65

Toll Rates – Trucks & Charter/Tour Buses

Other vehicles are charged every time they enter the CRZ.

Vehicle Type	E-ZPass Rate		Tolls by Mail Rate	
	Peak	Overnight	Peak	Overnight
Small trucks (<i>single-unit, box trucks</i>) Charter buses	\$14.40	\$3.60	\$21.60	\$5.40
Large trucks (<i>multi-unit trucks</i>) Tour buses	\$21.60	\$5.40	\$32.40	\$8.10



Small Truck



Large Truck

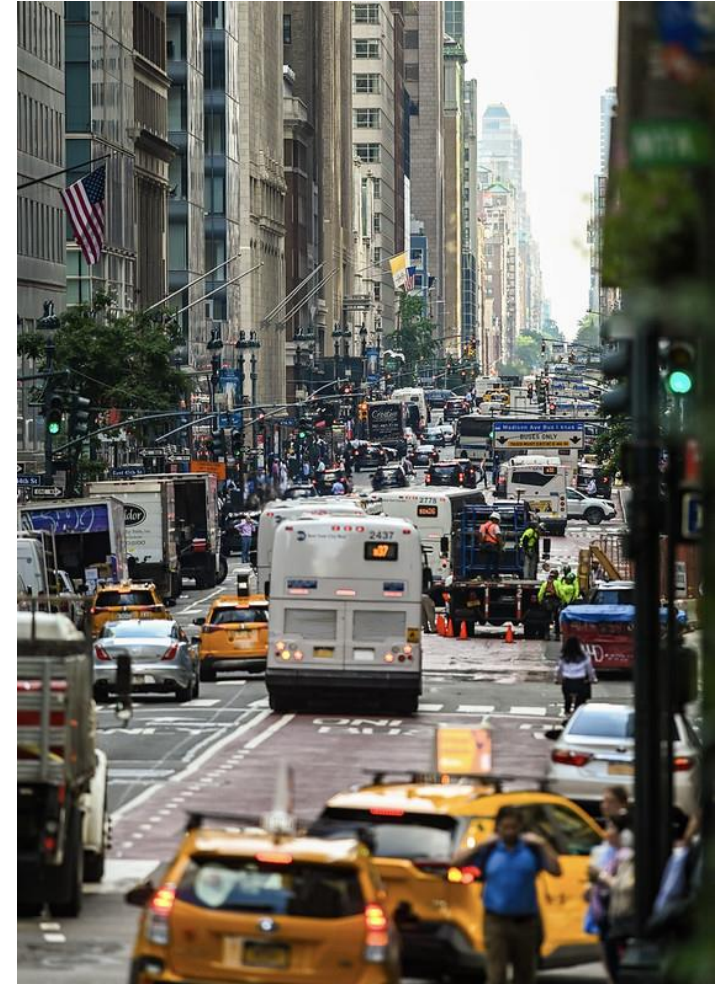


Tour Bus

Toll Rates – NYC TLC Licensed Taxis and FHVs

Qualifying organizations can choose to opt in to a per-ride charge system, instead of a daily toll.

- Yellow Taxis, Green Cabs, and Black Cars: \$0.75 per trip to, from, within, or through the zone.
- High-Volume For-Hire Vehicles: \$1.50 per trip to, from, within, or through the zone.



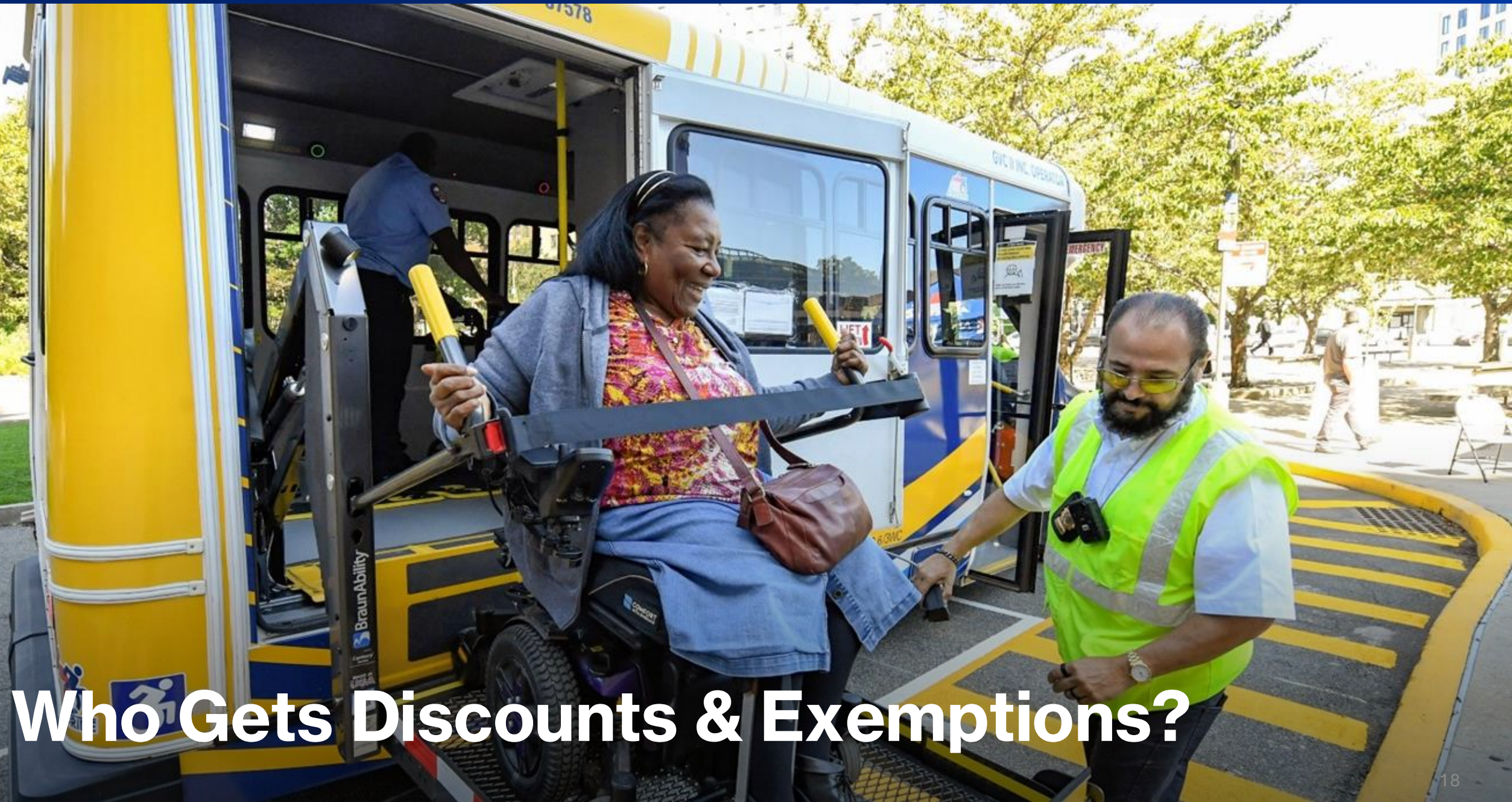
Crossing Credits

A credit on the CRZ toll will be given to vehicles entering during the **peak** period via one of the four tolled entries:

- Lincoln Tunnel
- Holland Tunnel
- Queens-Midtown Tunnel
- Hugh L. Carey Tunnel

To receive the credit, the vehicle must have a valid E-ZPass linked to the correct license plate.

Vehicle Type	Crossing Credit
Passenger Vehicle	Up to \$3
Motorcycle	Up to \$1.50
Small Trucks & Charter Buses	Up to \$7.20
Large Trucks & Tour Buses	Up to \$12



Who Gets Discounts & Exemptions?

Only Six Types of Discount / Exemptions

Certain vehicles qualify for discounts and exemptions. The discounts and exemptions are:

1. Low-Income Discount Plan (LIDP)
2. Individual Disability Exemption Plan (IDEP)
3. Organizational Disability Exemption Plan (ODEP)
4. Emergency Vehicle Exemption Plan (EVEP)
5. Commuter Bus Exemption Plan (CoBEP)
6. Specialized Government-Owned Vehicle Exemption Plan (SGOVEP)

There is a Low-Income Tax Credit for residents of the Congestion Relief Zone whose New York State adjusted gross income is under \$60,000. The New York Department of Taxation and Finance has more information on how to claim this tax credit posted on their website- visit tax.ny.gov for more information.

1. Low-Income Discount Plan (LIDP)

- Vehicle owners enrolled in the Low-Income Discount Plan (LIDP) receive a 50% discount on the Congestion Relief Zone peak period toll.
- Any vehicle owner can apply, no matter where they live.
- The discount begins after the first 10 trips in a calendar month and applies to all peak period trips after that for the remainder of that calendar month.
- To qualify for LIDP, vehicle owners must have reported a federal household adjusted gross income for the previous calendar year of no more than \$50,000 or be enrolled in a qualifying government assistance program (SNAP, WIC, or TANF).

Apply for LIDP at: mta.info/lidp

2. Individual Disability Exemption Plan (IDEP)

- Vehicles enrolled in IDEP are exempt from the Congestion Relief Zone toll.
- IDEP is available for individuals who have disabilities that prevent them from using mass transit.
- To qualify for IDEP, the vehicle must be registered to an individual with a disability that prevents them from using public transportation, or to a person designated by that individual, such as a caregiver, if they use that vehicle to drive the applicant into the Congestion Relief Zone.
- Applicants must first establish eligibility, and then use that eligibility to enroll in IDEP.
- Eligibility can be established either at an IDEP Assessment Center, or by providing qualifying documentation.

Apply for IDEP here: mta.info/idep

3. Organizational Disability Exemption Plan (ODEP)

- Vehicles enrolled in ODEP are exempt from the Congestion Relief Zone toll.
- ODEP is available for organizations that operate qualifying vehicles that transport people with disabilities
- Ex: paratransit services, ambulette services, or schools and special education facilities.
- To qualify for the exemption, a vehicle must be used solely for the purpose of transporting people with disabilities.

Apply for ODEP here: mta.info/odep

4. Emergency Vehicle Exemption Plan (EVEP)

- Emergency vehicles enrolled in EVEP are exempt from the Congestion Relief Zone toll.
- EVEP applies for vehicles specifically identified in the NYS Vehicle and Traffic Law.
- Ex: ambulances, fire vehicles, police vehicles, blood delivery and human organ delivery vehicles, and sanitation patrol.

Apply for EVEP here: mta.info/evep

5. Commuter Bus Exemption Plan (CoBEP)

- Buses and vans enrolled in CoBEP are exempt from the Congestion Relief Zone toll.
- This includes school buses contracted with the NYC Department of Education, commuter vans licensed with the NYC Taxi and Limousine Commission, and buses providing scheduled commuter services with fixed routes open to the public.
- Tour buses and charter buses are ineligible for CoBEP.

Apply for CoBEP here: mta.info/cobep

6. Specialized Government-Owned Vehicle Exemption Plan (SGOVEP)

- Vehicles enrolled in SGOVEP are exempt from the Congestion Relief Zone toll.
- Publicly owned vehicles specifically designed to perform public works other than general transportation, and directly engaged in a core agency purpose, are exempt from the Congestion Relief Zone toll.
- To qualify, vehicles must be owned or controlled by a federal, state, regional, or local government organization.
- E.g., garbage trucks, street-cleaning trucks, snow plows, pavers, or bucket trucks.

Apply for SGOVEP here: mta.info/sgovep

How to Apply for Discounts or Exemptions

All Discounts & Exemptions: mta.info/discounts

- LIDP: mta.info/lidp
- IDEP: mta.info/idep
- ODEP: mta.info/odep
- EVEP: mta.info/evpep
- CoBEP: mta.info/cobep
- SGOVEP: mta.info/sgovep

Applicants will receive a formal decision notice once their application is processed. If the application is denied, the decision notice will provide information on how to appeal.

APPLY NOW

The screenshot shows the MTA website navigation bar with links for Schedules, Maps, Fares & Tolls, and Planned Work. The breadcrumb trail indicates the page is under Bridges and Tunnels Tolls > Congestion Relief Zone tolling > Congestion Relief Zone Toll: Discounts and Exemptions. The main heading is 'Congestion Relief Zone Toll: Discounts and Exemptions'. The introductory text states: 'Some drivers and vehicles may qualify for discounts on, or exemptions from, the Congestion Relief Zone toll. Learn more below about who is eligible and how to apply.' Three sections are visible: 'Low-Income Discount' (describing a 50% discount for LIDP), 'Low-Income Tax Credit for Residents' (describing a tax credit for those with income under \$60,000), and 'Disability Exemptions' (describing the IDEP).

Enrolling for Discounts or Exemptions Requires an E-ZPass New York Account

Individuals and organizations without an E-ZPass New York account (individual or business) must apply for one separately from their application for discounts or exemptions.

Customers no longer need a \$10 deposit when creating an E-ZPass account.

E-ZPass customers can also Pay Per Trip. Instead of charging your credit card to maintain a minimum balance on your E-ZPass at all times, Pay Per Trip lets you pay only for the tolls you use by linking E-ZPass to your checking account.

AIN CONCOURSE ♦ METRO-NORTH ♦ SU

EXIT

TO MAIN CONCOURSE ♦ METRO-NORTH ♦ SUBWAY

TO RESTROOMS ♦ MAIN CONCOURSE ♦ METRO-NORTH ♦ SUBWAY

TO MAIN CONCOURSE ♦ METRO-NORTH ♦ SUBWAY
ELEVATORS TO 44TH ST ♦ MAIN CONCOURSE ♦ METRO-NORTH

45TH
STREET

45TH
STREET

↑ 43RD AND 42ND
STREETS
Ⓞ ELEVATORS TO:
↑ 42ND STREET
↑ 44TH STREET
↑ MAIN CONCOURSE
↑ METRO-NORTH • SUBW

TICKET VENDING MACHINES

Additional Resources

Get Ready for Congestion Relief

Update your E-ZPass account with your correct license plate.

Get a E-ZPass New York account if needed.

Apply for Discounts & Exemptions if you qualify.

Get Ready for Congestion Relief Zone Tolling, **starting at midnight on Sunday, January 5.**

Transit Discount Programs

Reduced-Fares

- Riders 65 years of age or older, or who have a qualifying disability can pay half price on subways and local, limited, or Select bus fares.
- Visit [mta.info/reduced-fare](https://www.mta.info/reduced-fare) to learn more.

Fair Fares

- Riders between the ages of 18 and 64 living in a New York City household that meets the program's income guidelines can qualify for a 50% discount on subway and eligible bus fares.
- Access-A-Ride customers may be eligible for a 50% discount on paratransit fares.
- Visit [nyc.gov/fairfares](https://www.nyc.gov/fairfares) or call 311 to learn more.



Important Websites

Congestion Relief Zone Overview: congestionreliefzone.mta.info

Toll Rates: congestionreliefzone.mta.info/tolling

FAQs: congestionreliefzone.mta.info/faqs

Newsletter: mta.info/crznewsletter

Sign up for Discounts & Exemptions: mta.info/discounts

New York City Transit's Customer Service Center: 511

E-ZPass NY: e-zpassny.com

E-ZPass Customer Service Center: 1-800-333-8655

Customer Feedback Form: <https://contact.mta.info/s/customer-feedback>



Department of
Transportation



Stillwell Avenue
& Surf Avenue
D F N

& Surf Avenue
D F N

Thank You